

February 2021

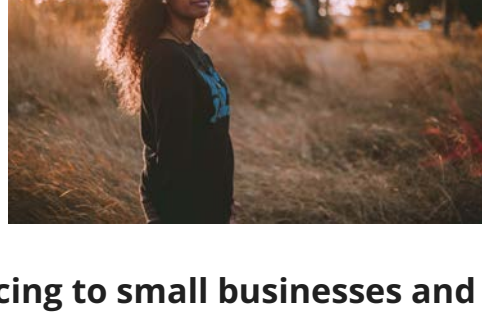
## Community Updates



\*|IFNOT:ARCHIVE\_PAGE|\*\*|IF:FNAME|\*Dear \*|FNAME|\*,  
\*|END:IF|\* \*|END:IF|\*

February may be shorter than the others, but this month comes in strong with the holidays. Not only was it Black History Month; our team also celebrated Lunar New Year, Valentine's Day, Presidents' Day, Mardi Gras...all in one whopping (long) weekend.

> We *do* have a lot to celebrate. As we continue closing capital gaps in order to close opportunity gaps, we're honored to work with the [Missionary Sisters of the Sacred Heart](#) (MSSH) to launch a “**people on the move**” portfolio.



This program will provide loans and **financing to small businesses and nonprofits that empower immigrants**, refugees, asylees, low-income economic migrants, and survivors of trafficking across the United States. This pilot will help fill a challenging gap in access to capital which we hope will make it easier for organizations to support people on the move with training, jobs, and access to critical services.

If you know a growing organization supporting immigrants, please share this program with them!

[Learn More About People on the Move Financing](#)

[Sign Up — Info Session on Friday 3/12](#)

> To close these gaps and reconnect capital and community, we believe it's critical to change the face of finance. That was the impetus for the [Community Finance Fellowship](#). And it's working. In their year with us, this first cohort of five thoughtful, intelligent, and adaptable emerging professionals helped accelerate the flow of capital into community—when it's really been needed. We can't believe they graduate in a few short weeks. **We are now actively fundraising for cohort 2!** Reach out to me or [Heather](#) to learn more.

> I'm also excited to announce that we've recently been included in not one, but TWO esteemed lists of incredible impact fund managers!

- The [Impact Assets IA 50](#) is the first publicly available database of impact investment firms for investors and their financial advisors, showing the breadth of impact fund managers that are creating positive impact.
- The [Integrated Capital Investing's Transformative 25 List](#) by founder Jen Astone spotlights twenty-five “myth-busters and courageous innovations” transforming finance for people and the planet.



> Last but not least, please join us on social media in March in celebrating milestones and highlights from our **first five years**.

We are grateful for the progress we've made with the support of our community of investors, portfolio companies, and champions like you—and look forward to creating even more impact together.

Stay well and take care of each other,

Lauren Grattan  
Co-Founder & Chief Community Officer

## Borrower Central

### New Loan Program for Small Businesses & Nonprofits

The People on the Move program serves organizations that better the lives of immigrants, refugees, and other New Americans. [Learn more and take the next steps for a loan here.](#)

### COVID-19 Loans for Nonprofits

Interest-free nonprofit loans from the [San Diego County COVID-19 Small Business & Nonprofit Loan Program](#) are still available. Please share with San Diego leaders you know!

### New Investment

Congratulations to [Rebuilding Together San Diego](#) (RTSD), the latest portfolio company to join our place-based strategy Advance. RTSD brings volunteers and communities together, living out their “neighbors helping neighbors” motto with their home rehabilitation efforts throughout San Diego County for homeowners who are low-income families, seniors, people with disabilities, and veterans.



## Investor Central

### Why I Invest: Rachel Lozano Castro

Meet one of our youngest supporters and her family, and see why they embraced our place-based Advance Strategy and philanthropic investing together.



Read more [here](#).

## What We're Reading

### Updates from our portfolio:

- [Verity selected by SD Angel Conference to pitch on March 20 for chance at up to \\$1M](#) [Yahoo Finance]
- [San Diego River Park Foundation, PATH team up for homeless encampment outreach](#) [The San Diego Union-Tribune]
- [Despite COVID headwinds, The Town Kitchen, PBC acquires local granola company Oat Cuisine](#) [Yahoo Finance]
- [Mainly Mozart's drive-in concerts help it 'stay true to our mission' during the pandemic](#) [La Jolla Light]

### What else we're reading:

- [Announcing the IA 50 2021!](#) [Impact Assets]
- [Due Diligence 2.0 Commitment](#)
- [Top Angel Investors — The Definitive List for 2021](#)
- [Inspiring Conversations with Rachel Lozano Castro of Living In Between](#) [SD Voyager]
- [Bridging the divide between impact investing and Native America](#) [Stanford Social Innovation Review]
- [Child Care in Crisis](#) [Third Way]
- [America's Childcare Crisis](#) [VIDEO—The Daily Show]
- [Shining a Spotlight on Sex Trafficking in San Diego](#) [Project Concern International]
- [Why I led a hunger strike against ICE in New Jersey](#) [The Counter]
- [9 trends that will shape work in 2021 and beyond](#) [Harvard Business Review]
- [The activists working to remake the food system](#) [The New York Times Style Magazine]
- ['The second way' to close the wealth gap](#) [American Banker]
- [The bakery that's owned by an idea](#) [Next City]
- [Building an American Ownership Society](#) [Stanford Social Innovation Review]
- [Neighborhood trusts are taking on speculators and building community wealth](#) [ImpactAlpha]

## Did Someone Forward This to You?

Get our newsletter in your inbox each month or find us on social media, and stay connected to what's happening in the world of inclusive finance.

[SUBSCRIBE](#)



Certified



This company meets the highest standards of social and environmental impact

Corporation

California Finance Lenders License #60DB0-72347

Copyright © \*|CURRENT\_YEAR|\* \*|LIST:COMPANY|\*, All rights reserved.

\*|IFNOT:ARCHIVE\_PAGE|\* \*|LIST:DESCRIPTION|\*

Our mailing address is:

\*|HTML:LIST\_ADDRESS\_HTML|\* \*|END:IF|\*

You are receiving this email because you had subscribed or interacted with us on or around \*|OPTIN\_DATE|\* using this email address.

Want to change how you receive these emails?  
You can [update your preferences](#) or [unsubscribe from this list](#).

\*|IF:REWARDS|\* \*|HTML:REWARDS|\* \*|END:IF|\*

This communication is for informational purposes only and does not constitute an offer to sell, a solicitation to buy, or a recommendation for any security, nor does it constitute an offer to provide investment advisory or other services. No reference to any specific security constitutes a recommendation to buy, sell or hold that security or any other security. Nothing in this communication shall be considered a solicitation or offer to buy or sell any security, future, option or other financial instrument or to offer or provide any investment advice or service to any person in any jurisdiction. Nothing contained in this communication constitutes investment advice or offers any opinion with respect to the suitability of any security, and the views expressed in this communication should not be taken as advice to buy, sell or hold any security.